

The **Jules Stein Eye Institute** and the **Doheny Eye Institute**
are pleased to invite you to the eighth

Los Angeles Imaging Conference for Retina Specialists (LAICRS)

LAICRS meetings continue to provide Los Angeles-area retina specialists with opportunities to share and discuss **interesting cases** and **clinical experiences**. We are pleased to announce that this conference will be moderated by **Lee M. Jampol, M.D.**, Louis Feinberg Professor and Chairman of Ophthalmology at the Feinberg School of Medicine at Northwestern University. Retina specialists and fellows are asked to submit cases in advance. Residents are encouraged to attend, but will not be presenting.

Location: Jules Stein Eye Institute
100 Stein Plaza
RPB Auditorium
Los Angeles, CA 90095

Date: Tuesday, February 9, 2010

Time: 6:00 pm - 7:00 pm -- Dinner
7:00 pm - 9:00 pm -- Case Presentations

Cost: Free

**RSVP by Tuesday,
Feb. 2, 2010:** Rosella Carreon
rcarreon@doheny.org
323-442-6582

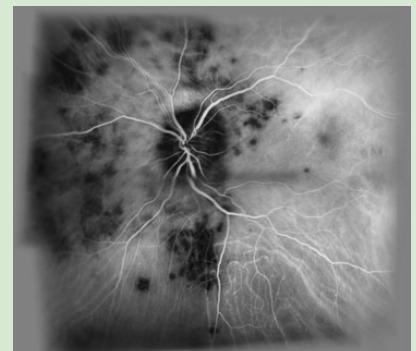
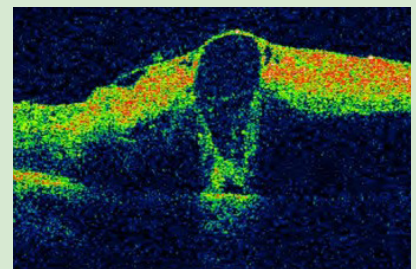
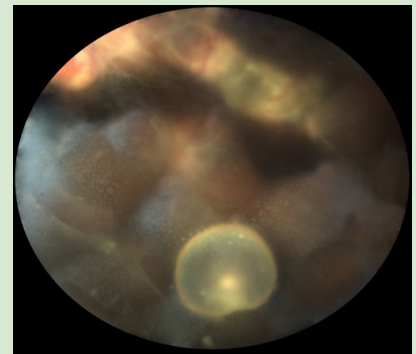
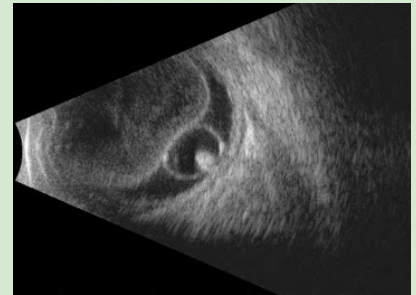
We hope that this forum will continue to stimulate a dynamic dialogue, serve as an educational opportunity, and facilitate scientific collaboration. We look forward to seeing you at LAICRS.



Dean Elliott, M.D.



David Sarraf, M.D.



Dean Elliott, M.D.
Director of Clinical Affairs
Doheny Retina Institute
USC Keck School of Medicine
deliott@doheny.org

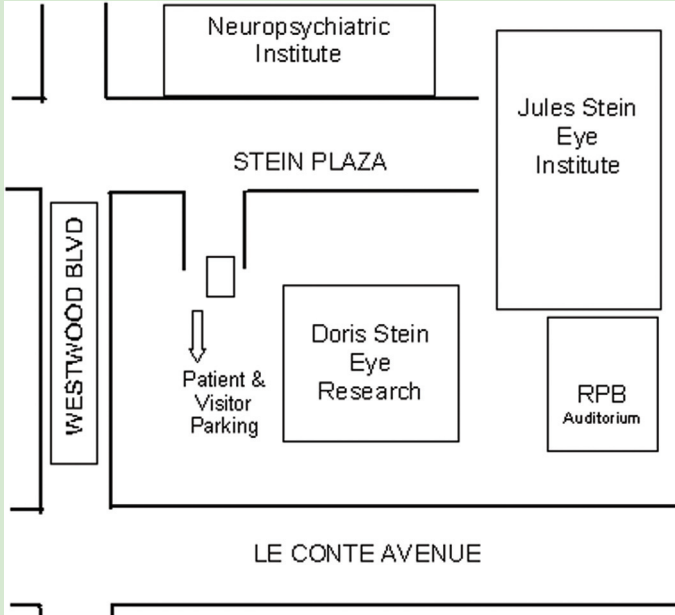
Amani Fawzi, M.D.
Assistant Professor
Doheny Retina Institute
USC Keck School of Medicine
afawzi@doheny.org

David Sarraf, M.D.
Associate Clinical Professor
Jules Stein Eye Institute
UCLA Geffen School of Medicine
dsarraf@ucla.edu

Steven Schwartz, M.D.
Chief, Retina Division
Jules Stein Eye Institute
UCLA Geffen School of Medicine
schwartz@jsei.ucla.edu

Los Angeles Imaging Conference for Retina Specialists (LAICRS)

Jules Stein Eye Institute
100 Stein Plaza
RPB Auditorium
Los Angeles, CA 90095



Location:

The Jules Stein Eye Institute is located on the UCLA campus at 100 Stein Plaza, at the corner of Westwood Boulevard and Le Conte Avenue. The RPB Auditorium is located next to the Jules Stein building.

Directions and Parking:

From the San Diego Freeway (I-405), take the Wilshire Boulevard off-ramp east, toward Westwood Boulevard. Turn left onto Westwood Boulevard from Wilshire Boulevard. After crossing Le Conte Avenue, turn right onto Stein Plaza. Parking is located immediately to the right in the lot adjacent to the Doris Stein Eye Research Center.